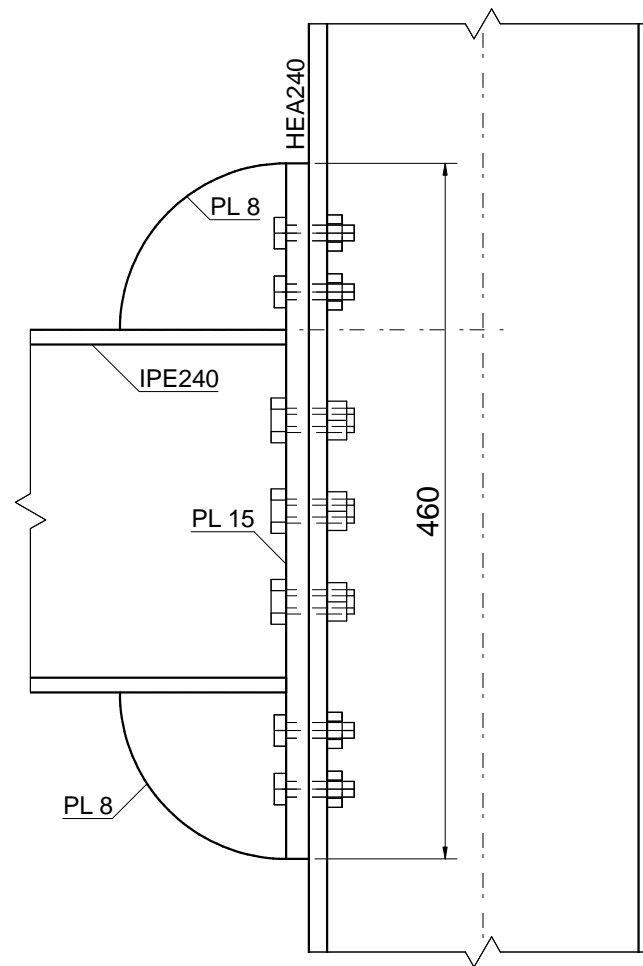
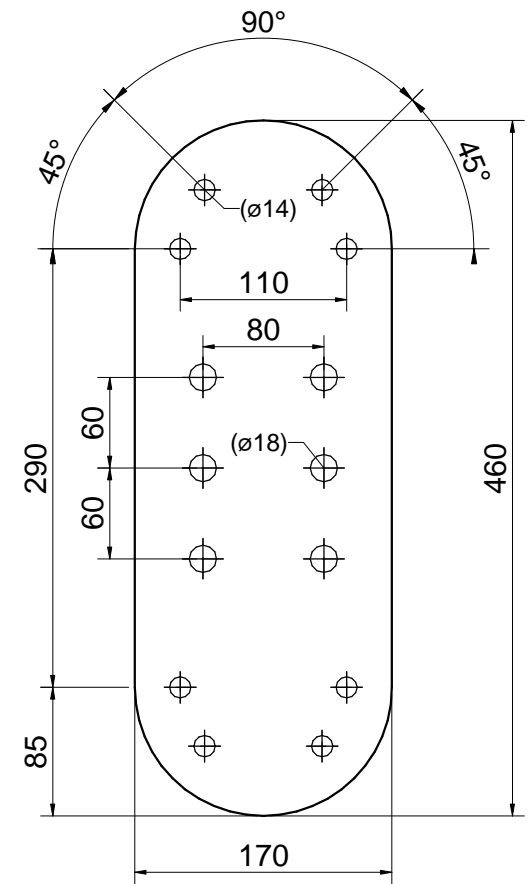


Front View

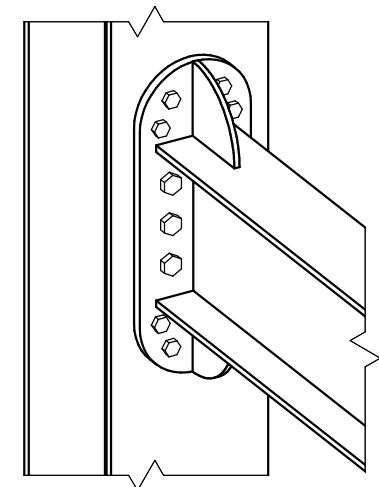
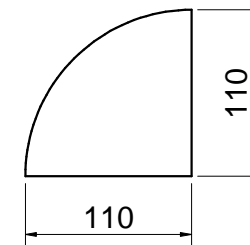


Side View



Rounded Endplate

- Model the joint as shown and then watch the tutorial
- The M12 bolts are 2 sets of 4 bolts each
- Create a "USER JOINT" and name it "Rounded Endplate" using "Collision type"
- Use it with different sized columns and use it in mirrored situations as well
- Redefine the "User Joint" and update all instances in the model
- Create a slightly modified version of the "User Joint" with a different name
- Tutorial: https://youtu.be/lV1DRuj_kBM



3D View